

PROFESSIONAL AND SAFETY



GHL[®]
LOCK EXPERTS
SINCE 1976



金華隆五金工業有限公司
GING HWA LONG HARDWARE INDUSTRY CO.,LTD

511彰化縣社頭鄉龍井村水井巷25-1號
|25-1, Shujin Lane, Longjin Village, Shetou, Changhua Town, Taiwan 511
|TEL / 886-4-8723607 · 8723608 · 8721937
|FAX / 886-4-8723605 |SKYPE / patents421
|E-mail / chris@ghl-lock.com · info@ghl-lock.com

WWW.GHL-LOCK.COM

2019-2020

ABOUT

Ging Hwa Long Hardware Industry Co.,Ltd (GHL)

has been recognizing as the leading lock manufacturer in Taiwan. In the early 1970' , the founder H.C. Lin saw the future of lock industry and stepped into lock business with passion. GHL began the product from padlocks, and gradually expanded into bike locks, and motorcycle locks. Today, hardware locks, bicycle locks and motorcycle locks are the 3 major product categories in GHL. We are expanding the business into different lock fields to satisfy comprehensive lock application.

For business, GHL has developed a strong foundation for global market. GHL has been accumulating the experience to cooperate with global customers to expand their product roadmap. What GHL can serve is the one stop solution, from concept design, prototype, tooling review and making, unto mass production.

The business philosophy of GHL is " Innovation, Quality, Open Mind, and Execution" . Thanks for our variety of products, insisting to deliver good quality products with elegant appearance, GHL is highly appraised and appreciated by customers.

For corporate strategy, ODM/OEM and promoting self brand is the binary plan to pursue business growing. GHL believes our products and service can offer dual channel customers to gain rich harvest.

Comes to us, GHL is the best choice for long term cooperation.

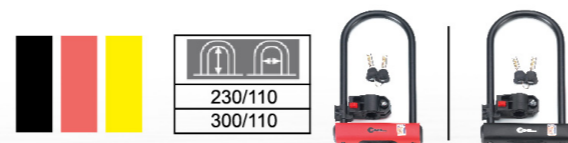


MOTORCYCLE / BICYCLE
**U SHACKLE
LOCK**



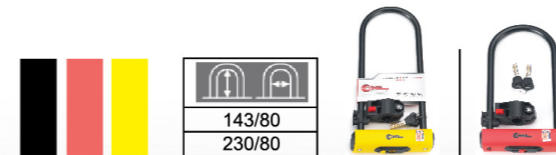
**GHL
059** **New**

Bicycle shackle lock
Dimple Key
Double bolted in the lock body
12/14mm shackle
Aluminum shackle available
Innovative housing cover and ergonomic shape for Best handling
Antidust cover to protect cylinder



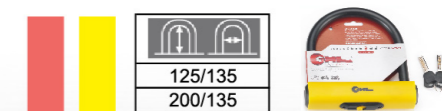
**GHL
057** **New**

Bicycle shackle lock
Dimple Key
Double bolted in the lock body
12/14mm shackle
Aluminum shackle available
Innovative housing cover and ergonomic shape for Best handling
Antidust cover to protect cylinder



**GHL
055**

Motorcycle U Shackle Lock
Dimple key
Patented outlook
14 mm steel shackle to resist hand tools
Antidust cover to protect cylinder
Innovative and ergonomic shape for best handling



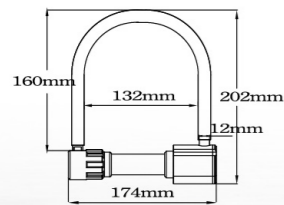
MOTORCYCLE / BICYCLE U SHACKLE LOCK



GHL
053

Motorcycle shackle lock

Dimple key
TW patent # M274410
12 mm steel shackle to resist hand tools



GHL
050

Motorcycle shackle lock

Dimple key
12mm steel shackle to resist
hand tools



GHL
039/036

Motorcycle shackle lock

GHL-039 Dimple key
GHL-036 Plain key
TW #M521575
12mm steel shackle to resist hand tools

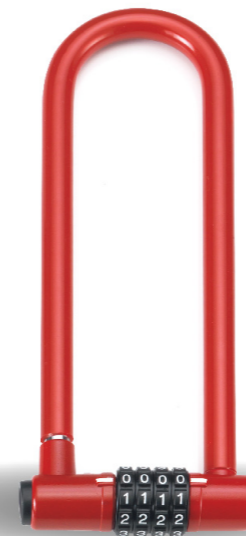
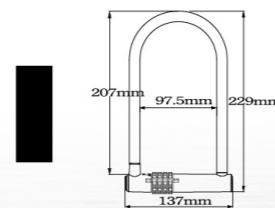


MOTORCYCLE / BICYCLE
U SHACKLE
LOCK



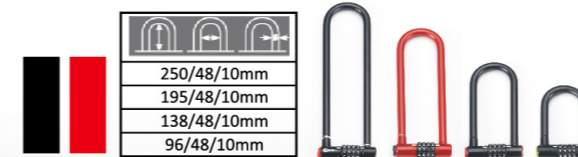
GHL
1032

Resettable combination shackle lock
4 digits resettable combination lock
US patent # 8297087
TW patent #M423725, #M390340
11mm steel shackle
Double sides locking mechanism



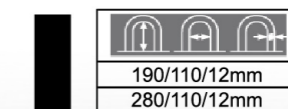
GHL
103

Resettable combination shackle lock
4 digits resettable combination lock
US patent # 8297087
TW patent #M423725, #M390340
10mm shackle to against hand tools
Luminous wheels available
Double side locking mechanism



GHL
061

Bicycle Shackle Lock
Dimple key
12mm steel shackle to resist hand tools
Bracket (option)



GHL Series

850 4 IN 1 DESIGN



New



850C, Chain Type



850A, Armor Type



850, Cable Type

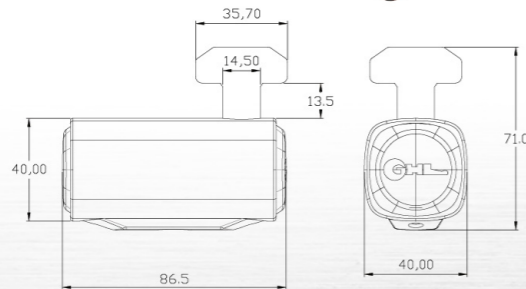


850D, Disc Type

GHL 850D

New

Heavy duty motorcycle lock
Dimple Key
Auto-locking mechanism

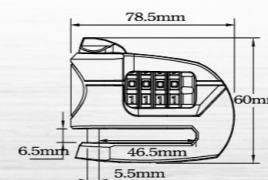


MOTORCYCLE DISC LOCK



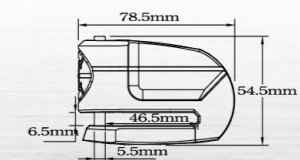
GHL 701

Motorcycle Resettable
Combination Disc Lock
4 digits resettable combination lock
Patent US#8297087
TW #M90340, #M423725
Hardened iron pin
Several colors for selection



GHL 706

Patented Push Cylinder Disc Lock
Tubular key patented push down cylinder
Patent US#5133203
TW #M364109, #M182882
Hardened iron pin
Several colors for selection



MOTORCYCLE / BICYCLE
**CHAIN
LOCK**



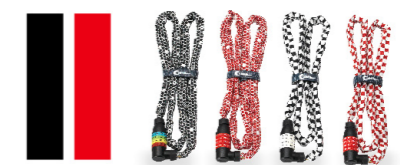
GHL
130

Hardened chain
Size / 4.7mm X 48"
6t (square) X 36"/48"



GHL
105C

Reflective printing sleeve available
Size / 4mm X 48"



4 digits resettable combination lock
US patent #8297087 , TW patent #M423725

MOTORCYCLE / BICYCLE

CHAIN LOCK



**CAMO
PATTERN**



**GHL
127C** **New**

Reflective printing sleeve available
Size / 4mm X 48"



**GHL
123C**

Reflective printing sleeve available
Size / 4mm X 48"



**GHL
120C**

3 digits resettable
combination lock
Reflective printing sleeve available
Size / 4mm X 36"



**GHL
102C**

3 digits fixed code
Reflective printing sleeve available
Size / 4mm X 36"



4 digits resettable combination lock
US patent #8297087 , TW patent #M423725

MOTORCYCLE / BICYCLE
**CHAIN
LOCK**



GHL
850C

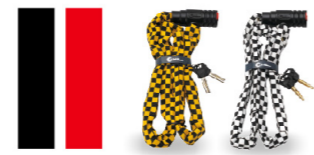
New

Dimple Key Chain Lock
6t X 36"/48"
Antidustcover



GHL
837C

837C Dimple key
Size / 4.7mm X 48"
6t (square) X 36"/48"



GHL
323C

Dimple key
Reflective printing available
Soft touch cover available
Size / 4mm X 48"



GHL
379C

Key Chain Lock
Wafer key
Reflective printing available
Size / 4mm X 48"





GHL
130A

4 digits resettable armor lock
Size / 22mm X 24"/36"/48"



GHL
127A

4 digits resettable armor lock
Size / 14mm X 48"



GHL
850A

Dimple key Armor lock
Size / 22mm X 24"/36"/48"



GHL
323A

Dimple key armor lock
Size / 14mm X 48"



GHL
DOUBLE LOOP

Double loop cable to link many vehicles to fixed object
Perfect for locking vehicles together with GHL lock
Size / CABLE 10mm / 12mm x 72"
CHAIN 4.7/6t x 48"



GHL
323L/823L LOOP CABLE

Dimple key
10mm strong premium steel cable to prevent damage the paintwork
Loop cable for multipurpose application
Locking several objects at once
10mm X 72"



GHL
001

bracket for bike lock
Fit with 8/10/12/15mm cable lock and U shackle lock



GHL 135

Resettable cable lock
Size / 15/18mm X 24"/36"/48"/60"/72"



GHL 108

Resettable cable lock
Size / 8/10/12mm X 24"/36"/48"/60"/72"



GHL 850

Dimple key cable lock
Antidust cover
Size / 15/20mm X 24"/36"/48"



GHL 323

Key Cable Lock
Dimple key
Size / 8/10/12/15mm
X 24"/36"/48"/60"/72"



GHL 105

Resettable cable lock
Size / 8/10/12mm X 24"/36"/48"/60"/72"



GHL 837

Key Cable Lock
Dimple key
Anti-dust cover to protect cylinder
Size / 15/20mm X 24"/36"/48"/60"/72"



GHL 123

Resettable cable lock
Size / 8/10/12mm X 24"/36"/48"/60"/72"



GHL 823

Key Cable Lock
Dimple key
Anti-dust cover to protect cylinder
Size / 8/10/12/15mm X 24"/36"/48"/60"/72"



GHL 127

Resettable cable lock
Size / 8/10/12mm X 24"/36"/48"/60"/72"



GHL 369

Key Cable Lock
Wafer key
Anti-dust cover to protect cylinder
Size / 8/10/12/15mm X 24"/36"/48"/60"/72"



GHL 120

Resettable cable lock
3 digits resettable combination lock
US patent # 8297087 , TW patent # M423725
Several Color wheels
Size / 8/10mm X 24"/36"/48"/60"/72"



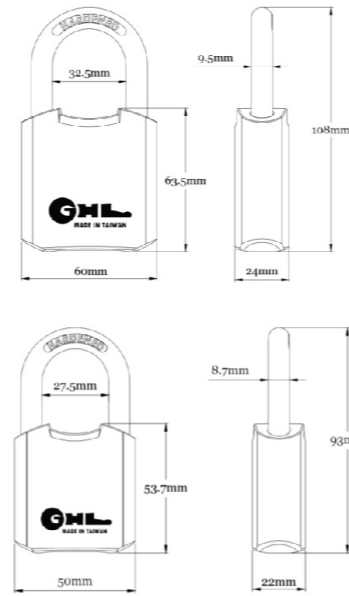
GHL 379

Key Cable Lock
Wafer key
Size / 8/10mm X 24"/36"/48"/60"/72"



4 digits resettable combination lock
US patent #8297087 , TW patent #M423725

HARDWARE LOCK



GH221 New

60/50mm available
4 brass dimple Key attached
New design european outlook
double dead bolt locking mechanism
Auto-locking mechanism
Hardened shackle

GH118

Cable Padlock



GH116

35mm & 40mm padlock

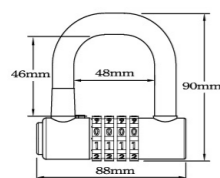
GH-116 35mm (8 buttons),
GH-116 40mm(10 buttons)
Fixed number padlock for universe usage
Several colors for selection
Silver , Red , Black , blue



GH107

Resettable Combination Padlock

4 digits resettable combination lock
US patent # 8297087 , TW patent #M423725, #M390340
10mm shackle to against hand tools
Luminous wheels available
Double side locking mechanism



GH Cylinder



3 layers

Cross

Round

Dimple

wafer